



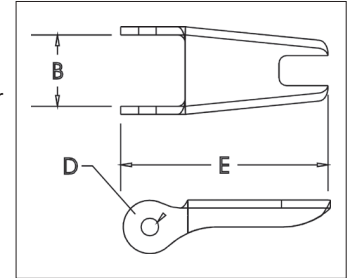
S-4320
Replacement Latch Kit



- Heavy duty stamped latch interlocks with the hook tip.
- High cycle, long life spring.
- Can be made into a "Positive Locking" Hook when proper cotter pin is utilized.
- Latch kits shipped unassembled and individually packaged with instructions.
- Meets the intent of OSHA Rule 1926.1431(g) and 1926.1501(g)(when secured with the bolt, nut and pin) for lifting personnel.

IMPORTANT: The new S-4320 Latch Kit will not fit the old style 319, 320 and 322 hooks.

HOOKS & SWIVELS

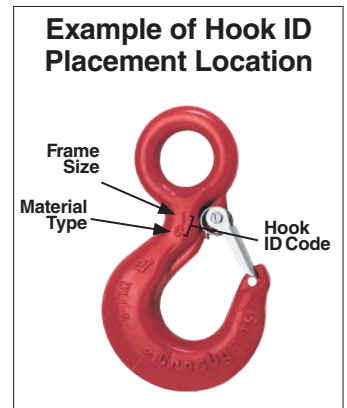


APPLICATION AND WARNING INFORMATION
SECTION 17

4

S-4320 Replacement Latch Kit
for 319N, 320N, 322N, 339N, 1327 and 1339 Hooks

Hook Size (t)			Hook ID Code	Stock No.	Weight Each (kg)	Dimensions (mm)		
Carbon	Alloy	Bronze				B	D	E
3/4	1	.5	D	1096325	.01	12.7	3.80	36.6
1	1-1/2	.6	F	1096374	.02	13.7	4.30	39.6
1-1/2	2	1	G	1096421	.02	16.0	4.30	42.2
2	3	1.4	H	1096468	.03	16.8	4.30	48.5
3	5	2	I	1096515	.05	21.1	5.10	58.5
5	7	3.5	J	1096562	.07	26.4	5.10	73.2
7-1/2	11	5	K	1096609	.13	31.8	6.85	90.5
10	15	6.5	L	1096657	.15	34.3	6.85	97.0
15	22	10	N	1096704	.38	42.2	9.90	132





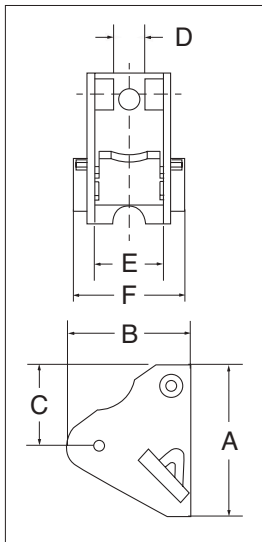
PL Latch Kits



LATCH ORDERING INSTRUCTIONS

Specify PL, PL-N or PL-O latch kit stock number from charts below.
Specify capacity of hook to which latch will be assembled.
Specify hook material (carbon or alloy).

- Hot-dip galvanized.
- Heavy duty latch with easy operating features.
- Flapper lever indicates locked or unlocked position.
- Assembly instructions included with each latch.
- For additional dimensional data on eye, shank or swivel hooks, see Warnings & Applications.
- Meets the intent of OSHA Rule 1926.1431(g) and 1926.1501(g) (when secured with the bolt, nut and pin) for lifting personnel.



APPLICATION AND WARNING INFORMATION SECTION 17

PL LATCH KITS

Hook Size (t)		Hook ID Code	Stock No.	Weight Each (kg)	Dimensions (mm)					
Carbon	Alloy				A	B	C	D	E	F
3	4-1/2	I	1093711	.24	68.3	60.7	52.6	16.0	28.7	49.5
5	7	J	1093712	.30	76.0	63.2	51.0	16.0	35.1	55.9
7-1/2	11	K	1093713	.45	92.0	62.5	60.5	16.0	41.4	63.2
10	15	L	1093714	.57	102	83.1	68.5	16.0	47.8	82.6
15	22	N	1093715	1.34	135	106	74.0	21.3	60.5	88.6
20	30	O	1093716	1.84	152	115	83.3	26.9	84.1	119
25	37	P	1093717	3.91	178	174	126	57.0	60.5	155
30	45	S	1093718	4.54	171	183	100	57.0	121	162
40	60	T	1093719	6.49	203	202	108	88.0	151	196
50	75	U	1093720	12.2	251	213	149	86.0	165	226
-	100-150	W - X	1093721	15.1	276	276	165	86.0	200	254
-	200	Y	1093723	20.4	302	284	162	86.0	222	286
-	300	Z	1093724	24.9	318	315	201	86.0	254	311

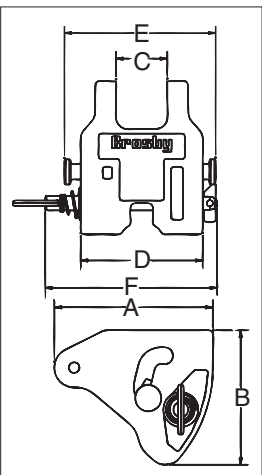
PL-N/O Latch Kits



LATCH ORDERING INSTRUCTIONS

Specify PL, PL-N or PL-O latch kit stock number from charts below.
Specify capacity of hook to which latch will be assembled.
Specify hook material (carbon or alloy).

- Heavy duty latch with easy operating features.
- PL-N designed for Crosby 319N & 320N style hooks, PL-O designed for Crosby 319 & 320 old style hooks.
- Flapper lever indicates locked or unlocked position.
- Assembly instructions included with each latch.
- For additional dimensional data on eye, shank or swivel hooks refer to the specific product page in this section.
- Meets the intent of OSHA Rule 1926.1431(g) and 1926.1501(g) (when secured with the supplied toggle pin) for lifting personnel.



APPLICATION AND WARNING INFORMATION SECTION 17

PL-N/O LATCH KITS

Hook Size (t)		Hook ID Code	PL-N Latch Kit Stock No.	PL-O Latch Kit Stock No.	Weight Each (kg)	Dimensions (mm)					
Carbon	Alloy					A	B	C	D	E	F
3	4.5 / 5 *	I	1092000	1091900	.36	60.9	51.0	21.1	54.1	68.8	87.4
5	7	J	1092001	1091901	.58	74.7	63.5	25.4	64.0	81.0	97.3
7-1/2	11	K	1092002	1091902	.90	92.2	76.7	30.2	69.9	87.4	111
10	15	L	1092003	1091903	1.27	102	86.1	34.0	81.0	102	114
15	22	N	1092004	1091904	2.22	132	110	40.9	98.0	122	130

**"N" style hooks are rated at 5 metric tons.



HOOKS & SWIVELS

SS-4055 Latch Kits



LATCH ORDERING INSTRUCTIONS

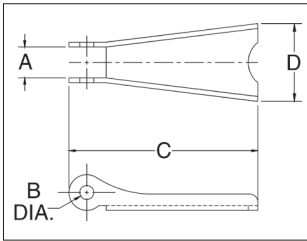
Specify latch kit stock number.
Specify capacity of hook to which latch will be assembled.
Specify hook material (carbon or alloy).

- Stainless steel construction with cadmium plated steel nuts.
- Shipped packaged and unassembled.
- Instructions included for easy field assembly.

APPLICATION AND WARNING INFORMATION SECTION 17

4

SS-4055 LATCH KITS



Hook Size (t)			Hook ID Code	Stock No.	Weight Each (kg)	Dimensions (mm)			
Carbon	Alloy	Bronze				A	B	C	D
3/4	1	.5	D	1090027	.01	9.65	4.05	36.6	15.0
1	1-1/2	.6	F	1090045	.01	9.65	4.05	40.6	15.0
1-1/2 - 2	2 - 3	1.0 - 1.4	G / H	1090063	.01	11.9	4.85	46.7	20.8
3	4-1/2	2.0	I	1090081	.05	14.2	4.30	61.0	25.4
5	7	3.5	J	1090107	.05	14.7	5.10	75.5	30.7
7-1/2 - 10	11 - 15	5.0 - 6.5	K / L	1090125	.08	15.0	6.86	93.0	38.1
15	22	10.0	N	1090143	.18	21.1	9.90	125	48.3
20	30	-	O	1090161	.29	23.9	13.2	149	65.0
25 - 30	37 - 45	-	P / S	1090189	.51	55.5	9.90	165	97.5
40	60	-	T	1090205	.80	84.0	13.2	200	105

S-4088

Alloy Hook Latch Kits

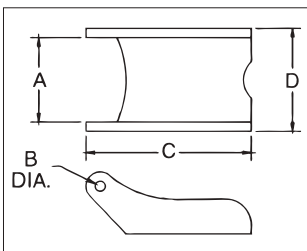


LATCH ORDERING INSTRUCTIONS

Specify latch kit stock number.
Specify capacity of hook to which latch will be assembled.
Specify hook material (carbon or alloy).

- To be used on A-327 and A-339 Grade 8 sling hooks.
- Latch kits shipped unassembled and individually packaged with instructions.

S-4088 Alloy Hook Latch Kits



Hook Chain (mm)	Stock No.	Weight Each (kg)	Dimensions (mm)			
			A	B	C	D
6-7	1090250	.03	19.8	4.05	51.5	23.9
8-10	1090251	.06	26.2	4.85	68.5	31.8
13	1090252	.07	26.2	4.85	76.0	31.8
16	1090253	.07	26.2	4.85	82.5	31.8
19	1090254	.07	38.9	6.60	105	47.8
22	1090255	.07	38.9	6.60	118	51.0